



Mv MANISA EMY

MANISA EMY

**Open hatch, box shaped, double skinned,
Single-decker, Ice class 1B
Grain / CO2 fitted**

General

Call sign: P.B.Y.R.

IMO number: 9421063

Built: 2008

Shipyard: Nanjing Huatai Shipyard Co. Ltd.

Classification: DNV-GL

Class notations: DNV-GL +100 A5 E2, Multi-Purpose Dry Cargo Vessel,
"G" strengthened for heavy cargoes, SOLAS II-2, Reg 19,
BWM-S +MC E1 Aut equipped for carriage of containers.
Ice Class 1B

Port of registry: Delfzijl

Flag: Dutch

P&I: Club North of England P&I Association

Insurance value: (euro) 7.000.000

Main particulars

DWAT: 8.101 mt

Length over all: 108,18 m

Breadth over all: 18,20 m

Drafts: Summer: 7,010 m - Tropical 7,156 m - Winter 8,864 m

TPC SSW: 17,80 mt/cm

Depth (moulded): 9,00 m

Distance WL-HC in ballast abt. 8,90 m

GT: 5.598

NT: 2.883

Cargo Capacities

Total cubic feet capacity 364.665 cbft grain/bale

Hold #1 95.844 cbft grain/bale

Hold #2 137.837 cbft grain/bale

Hold #3 130.984 cbft grain/bale

Holds/Hatches

3 Holds/ 3 Hatches: all types are: fully open hatch. Box shaped and double skinned

Dimensions holds:

#1 17,50 x 15,20 x 11,40 m

#2 25,20 x 15,20 x 9,20 m

#3 25,90 x 15,20 x 9,20 m

Electrical ventilation:

About 6 air changes per hour basis empty hold. Holds are fitted with dehumidifier system.

Bulkheads

Vessel is not fitted with bulkheads.

Strengths:

Max pressure tanktop: 15,00 mts/sqm

Max pressure weatherdeck:

#1: 2,20 mts/sqm

#2: 3,50 mts/sqm

#3: 3,50 mts/sqm

Including 8 heavy load points for pointloads upto 60 mts/sqm.

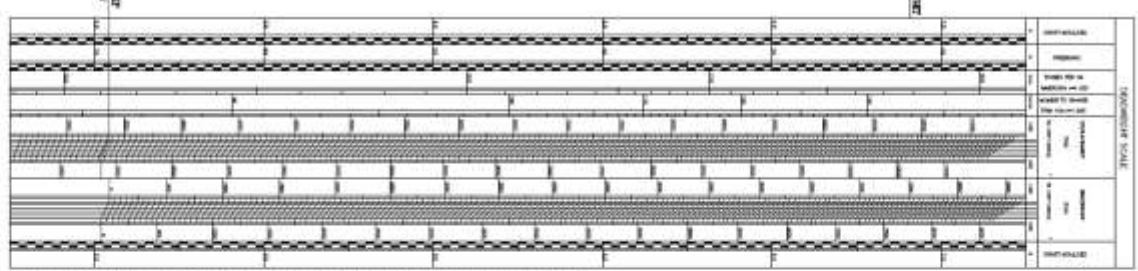
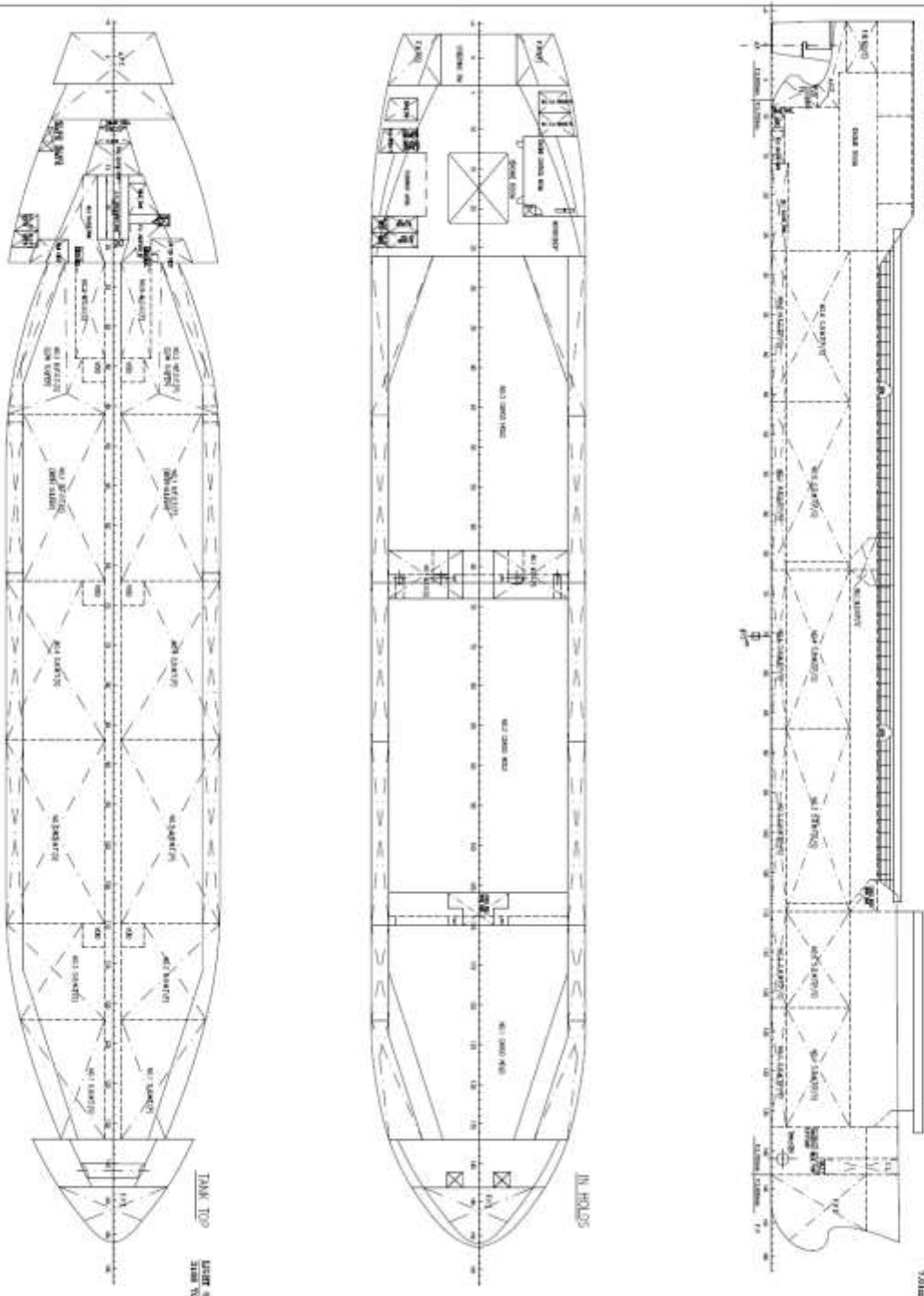
Engines

Main Engine: MAK 6M32 C, 3.000 kW

Propeller: Left-hand CCP

Bow Thruster: 250 kW

*All details are "about" given in good faith
without guarantee.*



NO.	DESCRIPTION	UNIT	QTY	WEIGHT	VOLUME	MARK
1	DECK PLATE	mm	12	12	12	
2	DECK RIBS	mm	12	12	12	
3	DECK STIFFENERS	mm	12	12	12	
4	HULL PLATE	mm	12	12	12	
5	HULL RIBS	mm	12	12	12	
6	HULL STIFFENERS	mm	12	12	12	

EXPLANATION