



## MANISA KATE

**Open hatch, box shaped, double skinned,  
Single-decker, Ice class 1B  
Grain / CO2 fitted  
Communication:**



### General

Call sign P.C.H.H.  
IMO number 9421099  
Built 2009  
Shipyard Nanjing Huatai Shipyard Co. Ltd.  
Classification DNV-GL  
Class notations DNV-GL +100 A5 E2, Multi-Purpose Dry Cargo Vessel, "G" strengthened for heavy cargoes, SOLAS II-2, Reg 19, BWM-S +MC E1 Aut equipped for carriage of containers.  
Ice Class 1B  
Port of registry Delfzijl  
Flag Dutch  
P&I Club North of England P&I Association  
Insurance value (euro) 7.000.000

### Main particulars

DWAT 8.101 mt  
Length over all 108,18 m  
Breadth over all 18,20 m  
Drafts Summer 7,010 m, Tropical 7,156 m, Winter 8,864 m  
Draft in ballast t.b.n.  
TPC SSW 17,80 mt/cm  
Depth (moulded) 9,00 m  
Distance WL-HC in ballast abt. 8,90 m  
GT 5.598  
NT 2.883

### Cargo Capacities

Total cubic feet capacity 364.665 cbft grain/bale  
Hold #1 95.844 cbft grain/bale  
Hold #2 137.837 cbft grain/bale  
Hold #3 130.984 cbft grain/bale

### Holds/Hatches

3 Holds/ 3 Hatches: all types are: fully open hatch. Box shaped and double skinned.

Dimensions holds #1 17,50 x 15,20 x 11,40 m  
#2 25,20 x 15,20 x 9,20 m  
#3 25,90 x 15,20 x 9,20 m

### Electrical ventilation:

About 6 air changes per hour basis empty hold. Holds are fitted with dehumidifier system.

**Bulkheads**

Vessel is not fitted with bulkheads.

**Strengths:**

Max pressure tanktop 15,00 mts/sqm

Max pressure weatherdeck #1 2,20 mts/sqm

#2 3,50 mts/sqm

#3 3,50 mts/sqm

Including 8 heavy load points for pointloads upto 60 mts/sqm.

**Tank capacities**

HFO 293 m3

MGO 69 m3

Water ballast capacity 2.200 m3

Fresh water 100 m3

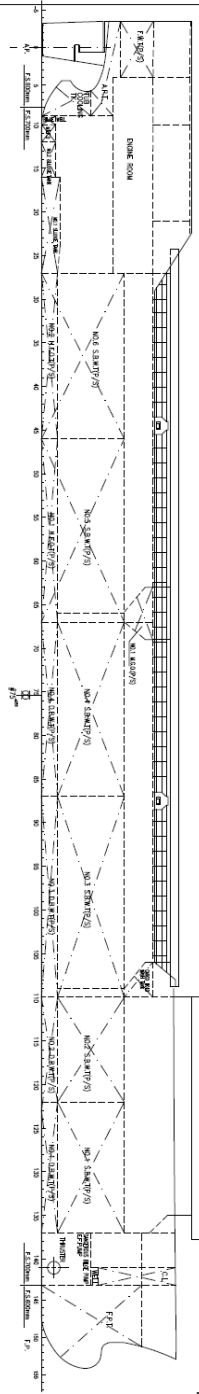
**Engines**

Main Engine MAK 6M32 C, 3.000 kW

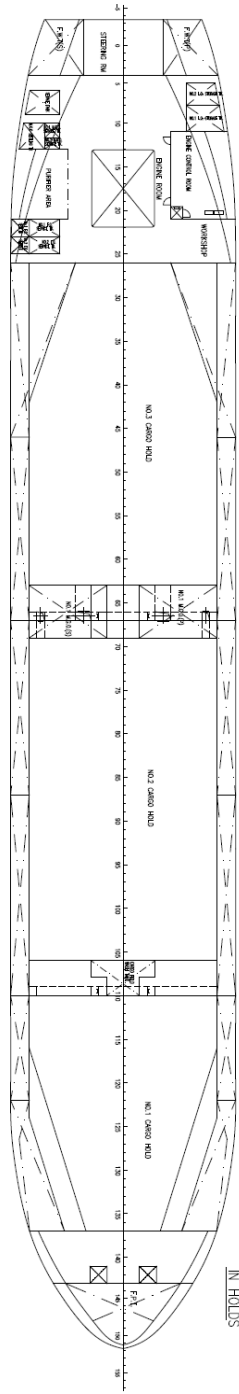
Propeller Left-hand CCP

Bow Thruster 250 kW

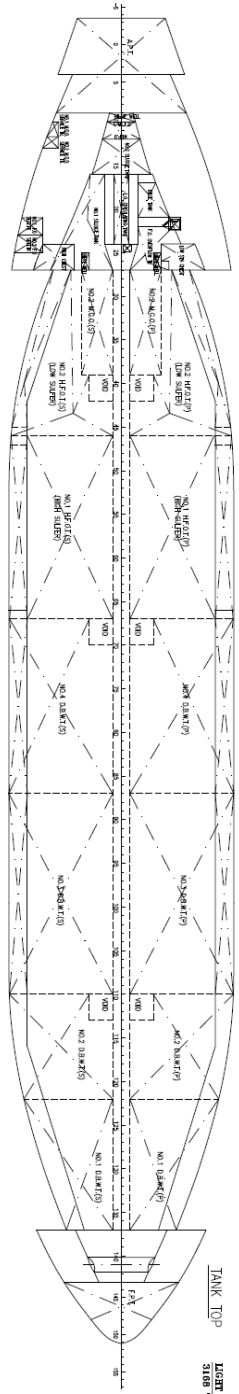
*All details are "about" given in good faith  
without guarantee.*



DECK PLAN  
7.7013A



IN HOLDS



TANK TOP

LIGHT SHIP  
3168 TON

GEOMETRIC SCALE

NO.	SECTION	SCALE	UNIT
1	SECTION 1	1:100	M
2	SECTION 2	1:100	M
3	SECTION 3	1:100	M
4	SECTION 4	1:100	M
5	SECTION 5	1:100	M
6	SECTION 6	1:100	M
7	SECTION 7	1:100	M
8	SECTION 8	1:100	M
9	SECTION 9	1:100	M
10	SECTION 10	1:100	M
11	SECTION 11	1:100	M
12	SECTION 12	1:100	M
13	SECTION 13	1:100	M
14	SECTION 14	1:100	M
15	SECTION 15	1:100	M
16	SECTION 16	1:100	M
17	SECTION 17	1:100	M
18	SECTION 18	1:100	M
19	SECTION 19	1:100	M
20	SECTION 20	1:100	M
21	SECTION 21	1:100	M
22	SECTION 22	1:100	M
23	SECTION 23	1:100	M
24	SECTION 24	1:100	M
25	SECTION 25	1:100	M
26	SECTION 26	1:100	M
27	SECTION 27	1:100	M
28	SECTION 28	1:100	M
29	SECTION 29	1:100	M
30	SECTION 30	1:100	M
31	SECTION 31	1:100	M
32	SECTION 32	1:100	M
33	SECTION 33	1:100	M
34	SECTION 34	1:100	M
35	SECTION 35	1:100	M
36	SECTION 36	1:100	M
37	SECTION 37	1:100	M
38	SECTION 38	1:100	M
39	SECTION 39	1:100	M
40	SECTION 40	1:100	M
41	SECTION 41	1:100	M
42	SECTION 42	1:100	M
43	SECTION 43	1:100	M
44	SECTION 44	1:100	M
45	SECTION 45	1:100	M
46	SECTION 46	1:100	M
47	SECTION 47	1:100	M
48	SECTION 48	1:100	M
49	SECTION 49	1:100	M
50	SECTION 50	1:100	M
51	SECTION 51	1:100	M
52	SECTION 52	1:100	M
53	SECTION 53	1:100	M
54	SECTION 54	1:100	M
55	SECTION 55	1:100	M
56	SECTION 56	1:100	M
57	SECTION 57	1:100	M
58	SECTION 58	1:100	M
59	SECTION 59	1:100	M
60	SECTION 60	1:100	M
61	SECTION 61	1:100	M
62	SECTION 62	1:100	M
63	SECTION 63	1:100	M
64	SECTION 64	1:100	M
65	SECTION 65	1:100	M
66	SECTION 66	1:100	M
67	SECTION 67	1:100	M
68	SECTION 68	1:100	M
69	SECTION 69	1:100	M
70	SECTION 70	1:100	M
71	SECTION 71	1:100	M
72	SECTION 72	1:100	M
73	SECTION 73	1:100	M
74	SECTION 74	1:100	M
75	SECTION 75	1:100	M
76	SECTION 76	1:100	M
77	SECTION 77	1:100	M
78	SECTION 78	1:100	M
79	SECTION 79	1:100	M
80	SECTION 80	1:100	M
81	SECTION 81	1:100	M
82	SECTION 82	1:100	M
83	SECTION 83	1:100	M
84	SECTION 84	1:100	M
85	SECTION 85	1:100	M
86	SECTION 86	1:100	M
87	SECTION 87	1:100	M
88	SECTION 88	1:100	M
89	SECTION 89	1:100	M
90	SECTION 90	1:100	M
91	SECTION 91	1:100	M
92	SECTION 92	1:100	M
93	SECTION 93	1:100	M
94	SECTION 94	1:100	M
95	SECTION 95	1:100	M
96	SECTION 96	1:100	M
97	SECTION 97	1:100	M
98	SECTION 98	1:100	M
99	SECTION 99	1:100	M
100	SECTION 100	1:100	M

NAME	FORM	SHAPE	SCALE	UNIT	COG	CGZ	CGZ	CGZ	CGZ
NAME	FORM	SHAPE	SCALE	UNIT	COG	CGZ	CGZ	CGZ	CGZ
NO.1	101	101	1:100	M	10.0	10.0	10.0	10.0	10.0
NO.2	102	102	1:100	M	10.0	10.0	10.0	10.0	10.0
NO.3	103	103	1:100	M	10.0	10.0	10.0	10.0	10.0
NO.4	104	104	1:100	M	10.0	10.0	10.0	10.0	10.0
NO.5	105	105	1:100	M	10.0	10.0	10.0	10.0	10.0
NO.6	106	106	1:100	M	10.0	10.0	10.0	10.0	10.0
NO.7	107	107	1:100	M	10.0	10.0	10.0	10.0	10.0
NO.8	108	108	1:100	M	10.0	10.0	10.0	10.0	10.0
NO.9	109	109	1:100	M	10.0	10.0	10.0	10.0	10.0
NO.10	110	110	1:100	M	10.0	10.0	10.0	10.0	10.0
NO.11	111	111	1:100	M	10.0	10.0	10.0	10.0	10.0
NO.12	112	112	1:100	M	10.0	10.0	10.0	10.0	10.0
NO.13	113	113	1:100	M	10.0	10.0	10.0	10.0	10.0
NO.14	114	114	1:100	M	10.0	10.0	10.0	10.0	10.0
NO.15	115	115	1:100	M	10.0	10.0	10.0	10.0	10.0
NO.16	116	116	1:100	M	10.0	10.0	10.0	10.0	10.0
NO.17	117	117	1:100	M	10.0	10.0	10.0	10.0	10.0
NO.18	118	118	1:100	M	10.0	10.0	10.0	10.0	10.0
NO.19	119	119	1:100	M	10.0	10.0	10.0	10.0	10.0
NO.20	120	120	1:100	M	10.0	10.0	10.0	10.0	10.0
NO.21	121	121	1:100	M	10.0	10.0	10.0	10.0	10.0
NO.22	122	122	1:100	M	10.0	10.0	10.0	10.0	10.0
NO.23	123	123	1:100	M	10.0	10.0	10.0	10.0	10.0
NO.24	124	124	1:100	M	10.0	10.0	10.0	10.0	10.0
NO.25	125	125	1:100	M	10.0	10.0	10.0	10.0	10.0
NO.26	126	126	1:100	M	10.0	10.0	10.0	10.0	10.0
NO.27	127	127	1:100	M	10.0	10.0	10.0	10.0	10.0
NO.28	128	128	1:100	M	10.0	10.0	10.0	10.0	10.0
NO.29	129	129	1:100	M	10.0	10.0	10.0	10.0	10.0
NO.30	130	130	1:100	M	10.0	10.0	10.0	10.0	10.0
NO.31	131	131	1:100	M	10.0	10.0	10.0	10.0	10.0
NO.32	132	132	1:100	M	10.0	10.0	10.0	10.0	10.0
NO.33	133	133	1:100	M	10.0	10.0	10.0	10.0	10.0
NO.34	134	134	1:100	M	10.0	10.0	10.0	10.0	10.0
NO.35	135	135	1:100	M	10.0	10.0	10.0	10.0	10.0
NO.36	136	136	1:100	M	10.0	10.0	10.0	10.0	10.0
NO.37	137	137	1:100	M	10.0	10.0	10.0	10.0	10.0
NO.38	138	138	1:100	M	10.0	10.0	10.0	10.0	10.0
NO.39	139	139	1:100	M	10.0	10.0	10.0	10.0	10.0
NO.40	140	140	1:100	M	10.0	10.0	10.0	10.0	10.0
NO.41	141	141	1:100	M	10.0	10.0	10.0	10.0	10.0
NO.42	142	142	1:100	M	10.0	10.0	10.0	10.0	10.0
NO.43	143	143	1:100	M	10.0	10.0	10.0	10.0	10.0
NO.44	144	144	1:100	M	10.0	10.0	10.0	10.0	10.0
NO.45	145	145	1:100						