



**MANISA**

---

## **Mv Manisa Camilla**

**Flag:** Portugal

**Imo No :** 9362669

**Year:** 2006

box type single decker - double skinned - gearless

**Class:** Rina

**P & I:** West of England

Bow Thruster Fitted

### **Dimension:**

8200 mt sdwat on 7.045 ssw

LOA: 108.20

Beam: 18.20

GT/NT: 5581 / 2835

Number Of Holds: 3

### **Capacities:**

Hold 1: 95,830 cbft

Hold 2: 137,819 cbft

Hold 3: 130,966 cbft

**Total Grain capacity:** abt 364,615 cft

### **Hold dimensions:**

Ho 1: 18.85 x 15.20 x 11 m (hold gradually narrows abt 2,2 m from aft bulkhead to a width of abt 6,4 m at the forepeak bulkhead)

Ho 2: 29,40 x 15,20 x 9,20 m (no narrowing)

Ho 3: 27,25 x 15,20 x 9,20 m holds start to narrow 17,00 m from forward bulkhead to a width of abt 7,6 m at the aft bulkhead.

### **Hatch dimensions:**

n.1: 17,70 x 15,40 m

n.2: 26,10 x 15,40 m

n.3: 25,40 x 15,40 m

**Hatch system:** hydraulic folding cover

**Tanktop Strength:** 15 mt/m<sup>2</sup>

Lakes/Grain/Timber/Co2/Suez/Panama Fitted

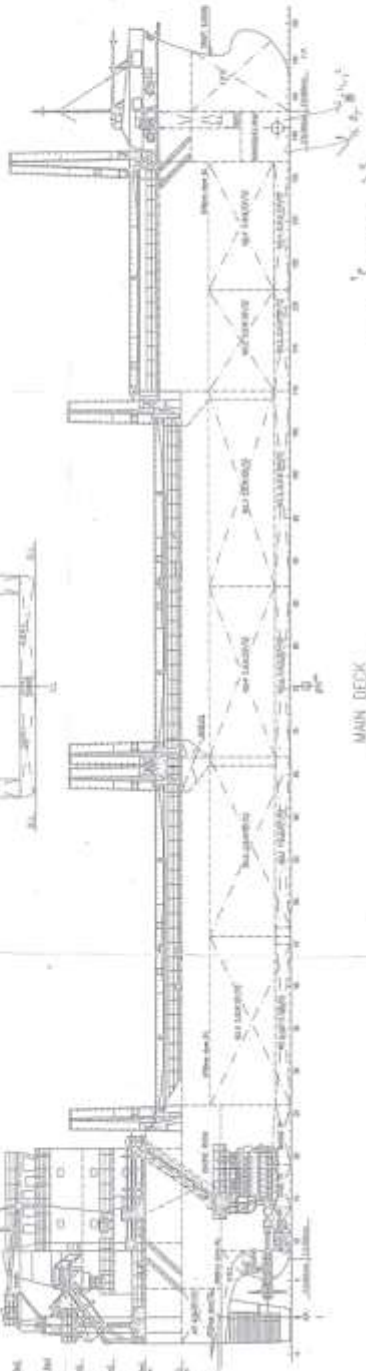
**TPC:** 16/18 ts

Tank top load: 15 mts/sqm

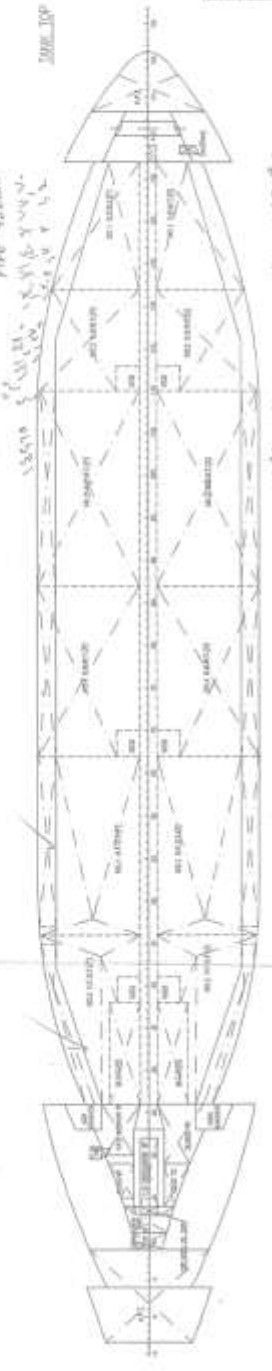
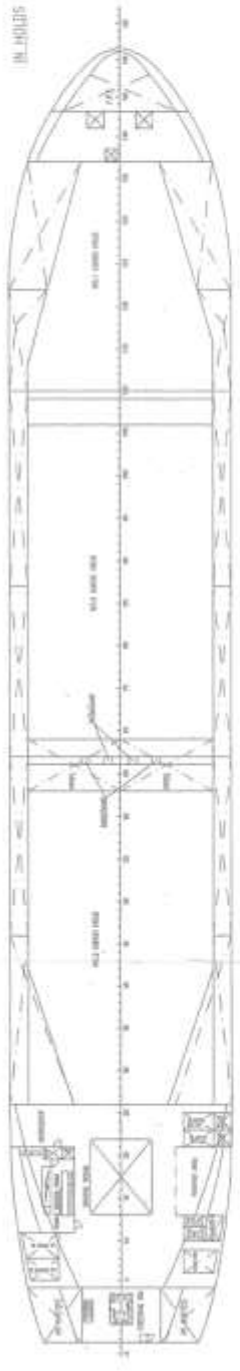
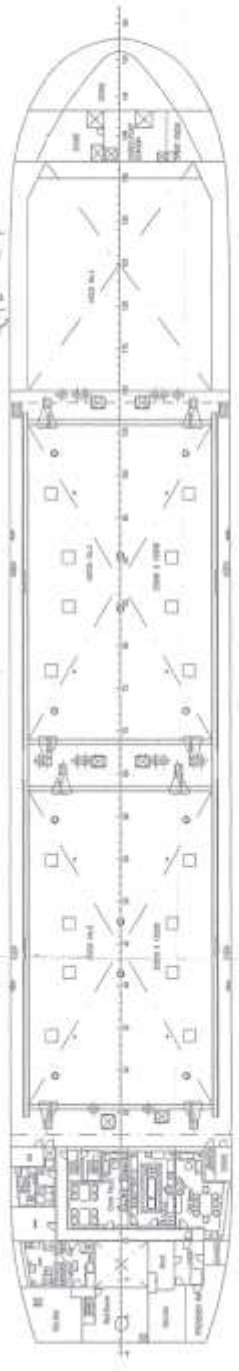
*All details are 'about' given in good faith without guarantee*

NO. 1000

- 1. MAIN DECK
- 2. DECK
- 3. DECK
- 4. DECK
- 5. DECK
- 6. DECK
- 7. DECK
- 8. DECK
- 9. DECK
- 10. DECK

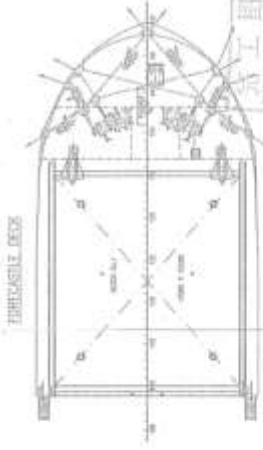
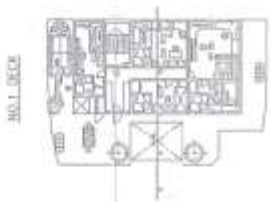
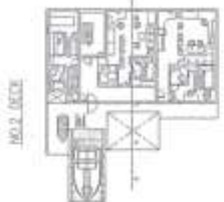
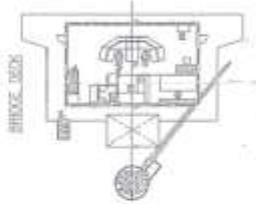


ALL CURS. 15



SHIP'S PARTICULARS

NAME	...
TYPE	...
REGISTRATION	...
NET TONNAGE	...
GROSS TONNAGE	...
REGISTERED TONNAGE	...
LENGTH	...
BREADTH	...
DRAUGHT	...
DEPTH	...
DISPLACEMENT	...
SAFETY	...
...	...



NAME	...
TYPE	...
REGISTRATION	...
NET TONNAGE	...
GROSS TONNAGE	...
REGISTERED TONNAGE	...
LENGTH	...
BREADTH	...
DRAUGHT	...
DEPTH	...
DISPLACEMENT	...
SAFETY	...
...	...